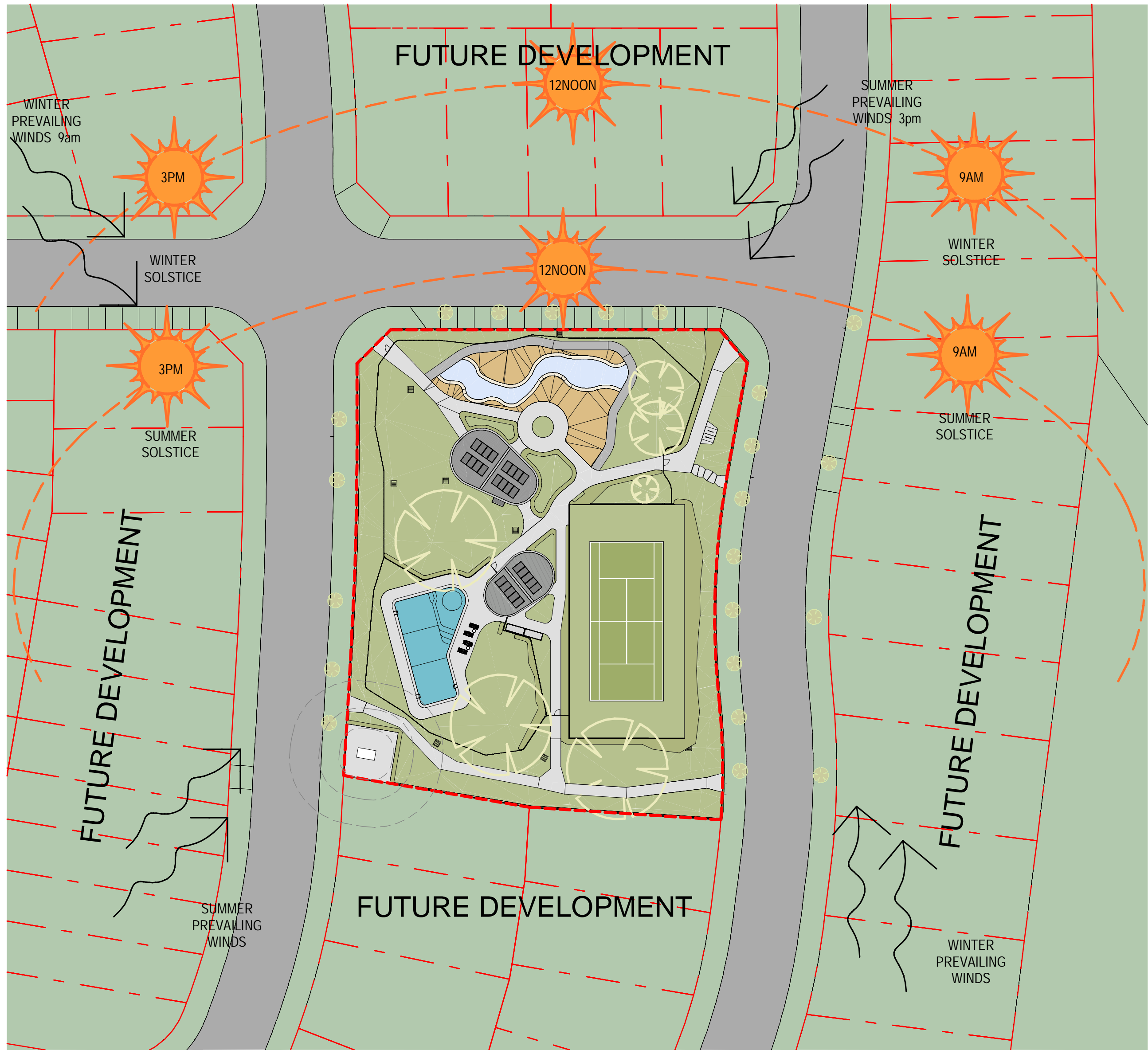




1 LOCALITY PLAN  
1 : 2000

DISTANCES TO NEARBY LANDMARKS

- Milperra Public School
  - East Hills Technology Highschool
  - Liverpool Westfields
  - Sydney City CBD
  - Parramatta City CBD
  - East Hills Train Station
  - Brighton Lakes Golf Club
- Approx 10 min walk
  - Approx 9 min drive
  - Approx 20 min drive
  - Approx 30 min drive
  - Approx 30 min drive
  - Approx 7 min drive
  - Approx 10 min drive



2 SITE ANALYSIS  
1 : 500





0mm

100mm

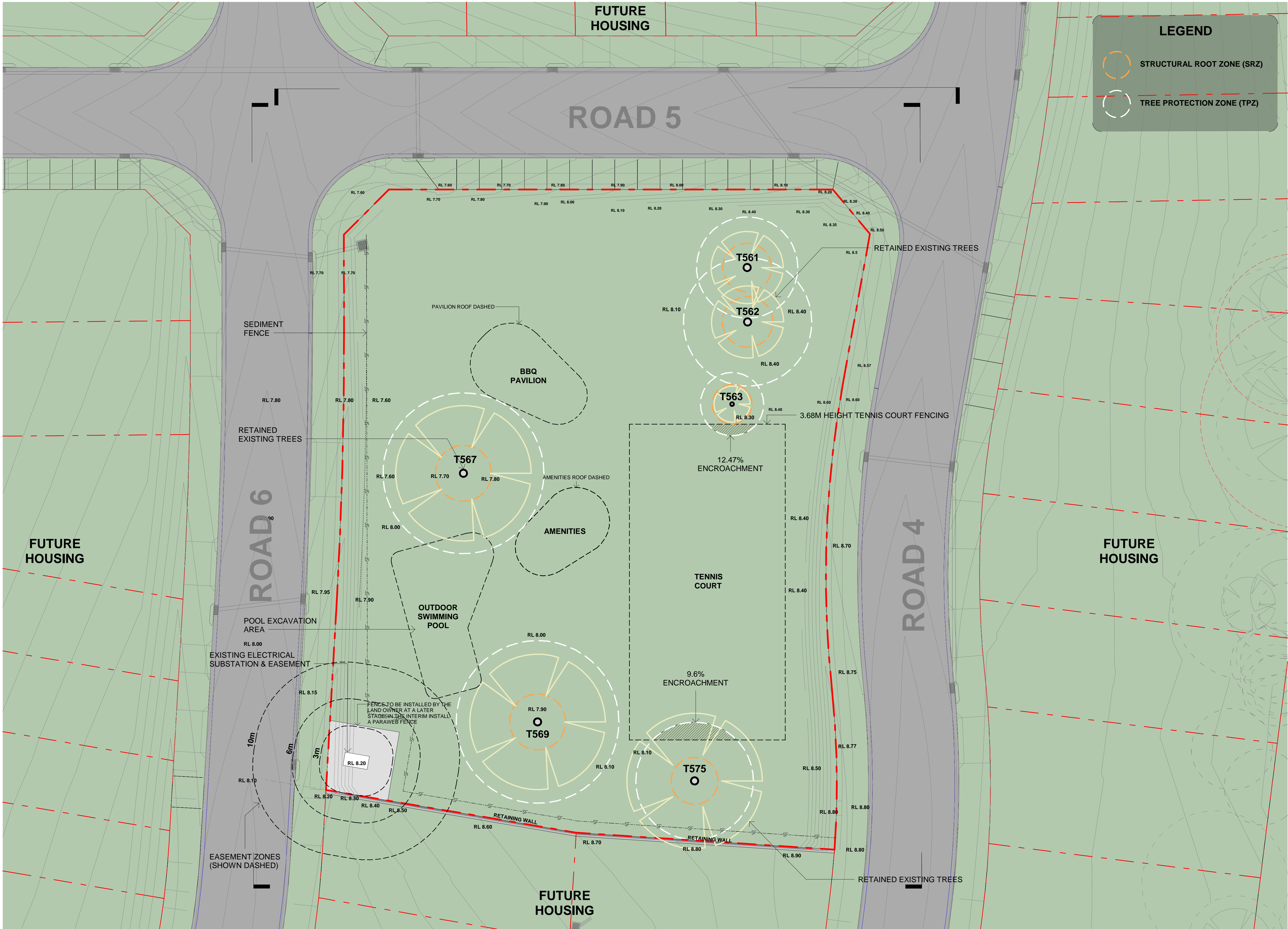
200mm

300mm

100mm

200mm

300mm



31/01/25  
11/12/24  
29/11/24  
19/06/24  
17/06/24  
6/06/25

E  
D  
C  
B  
A

ISSUE FOR DA  
DRAFT DA ISSUE FOR REVIEW  
DRAFT DA ISSUE FOR REVIEW  
ISSUE FOR DA APPLICATION  
ISSUE FOR INFORMATION

amendment

MIRVAC  
DESIGN

Level 28 200 George St  
Sydney NSW 2000  
Tel: 02 9550 8000

Mirvac Design Pty Ltd  
ABN 70 007 997 937  
Mirvac Design Nomination / Responsible Architects  
Aulis Varnas Michael Milner David Hino Paramanyr Sridharan Andrew La Nicolas Theodorou  
https://www.mirvacdesign.com/nomination-architects

client

mrvac

project:

Riverlands Community Facility

Address: 56 PRESCOT PARADE, MILPERRA NSW 2214

Stage:

Site:

Lot:

Model Type:

title:

SITE PLAN & SEDIMENT CONTROL  
PLAN

job no:

MB-10243

drawing no:

DA002

scale @ A1 : 1 : 200

date:

31/01/25

rev:

E

